

Kaenon International Finn Australian Championships

Adelaide Sailing Club South Australia
3rd January 2012 to 8th January 2012

SAILING INSTRUCTIONS

The Organising Authority is the Adelaide Sailing Club Inc. (ASC) on behalf of the International Finn Association of Australia.

1. RULES

- 1.1 The regatta will be governed by the rules as defined in the Racing Rules of Sailing.
- 1.2 The Prescriptions and Special Regulations of Yachting Australia will apply.
- 1.3 The rules of the International Finn Class (except as any of these are altered by the Notice of Race and Sailing Instructions.)

2. NOTICES TO COMPETITORS

Notices to competitors will be posted on the official notice board located on the north face of the upstairs area of ASC.

3. CHANGES TO SAILING INSTRUCTIONS

Any changes to the sailing instructions will be posted not less than ninety (90) minutes before the next scheduled start, except that any change in the schedule of races will be posted by 1800 hrs on the day before it will take effect.

4. SIGNALS MADE ASHORE

- 4.1 Signals made ashore will be displayed from the main flag mast located North of the ASC building.
- 4.2 When flag AP is displayed on shore, the warning signal will be made not less than 30 minutes after the AP flag is lowered. This alters race signals "AP"

5. MEASUREMENT AND REGISTRATION

- 5.1. Each boat shall produce a valid measurement certificate.
- 5.2. Older boats may be given dispensation from this requirement.
- 5.3. Competitors may use two masts and two sails during the regatta which must be declared at registration.

6. SCHEDULE

Day / Date	Event Time	Warning Signal
Tues 3 rd January 2012	Registration, Measurement	1500 to 1700 hours
Tues 3 rd January 2012	Welcome, Briefing	1700 to 1900 hours
Wed 4 th January 2012	Races	1300 hours
Thurs 5 th January 2012	Races	1300 hours
Fri. 6 th January 2012	Races	1300 hours
Sat 7 th January 2012	Races	1300 hours
Sun 8 th January 2012	Races	1100 hours
Sun 8 th January 2012	Presentation	After racing

- 6.1. 10 races are scheduled.
- 6.2. Two races per day are planned. Additional races may be sailed on any day provided that the regatta does not become more than one race ahead of schedule.
- 6.3. No more than 3 races will be sailed back to back.
- 6.4. No warning signal shall be made after 1500 hours on Sunday 8th January 2012.
- 6.5. When more than one race will be held in the same session, the Warning signal for each succeeding race will be made as soon as practicable. To alert boats that another race will begin soon, an Orange flag will be displayed with one sound signal for at least four minutes before a Warning Signal is displayed.

7. CLASS FLAGS

The Finn class flag is the class emblem on a blue background.

8. RACING AREA

The sailing area will be on the waters of St Vincent's Gulf, west of the ASC Attachment 1 shows the location of the racing area.

9. THE COURSE

- 9.1 Courses shall be windward and return or triangle configuration.
- 9.2 The course number will be signalled via a course board on the Committee Boat.
- 9.3 The diagram in Attachment 1 show the courses, the order in which marks are to be passed and the side on which each mark is to be left.
- 9.4 No later than the warning signal, the Committee Boat may display the approximate compass bearing of the first leg.
- 9.4. The target time for races is 60 to 70 minutes.
- 9.5 Races finishing outside this target time do not give grounds for a request for redress.

10 MARKS

- 10.1 Marks 1 and 2 will be yellow inflatable buoys.
Mark 3 will be a pink inflatable buoy.
- 10.3 The starting mark will be an orange flag. This flag may be on a stick mark or on an anchored boat
- 10.4 The finishing mark will be a blue flag on a stick mark.

11 THE START

- 11.1 Races will be started by using rule 26.
- 11.2 The starting line will be between the staff displaying the orange flag on the Race Committee boat at the starboard end and the port end starting mark.
- 11.3 A buoy flying a white flag may be streamed from the Race Committee Boat. For the purpose of the application of RRS, the buoy is deemed to be a permanent part of the Committee Boat and any boat touching the buoy or passing between it and the Committee Boat shall be deemed to have touched the Committee Boat.
- 11.4 A boat starting later than five minutes after her starting signal will be scored Did Not Start. This changes rule A4.
- 11.6 At the Race Officers discretion the sequence of starting may be changed. The flying of the appropriate class flag warning signal will indicate the change.

12. CHANGE OF THE NEXT LEG OF THE COURSE

- 12.1 To change the next leg of the course, the race committee will re-set the original mark.

13. THE FINISH

The finishing line will be between the staff displaying a blue flag on the Race Committee boat and the finishing buoy.

14. PENALTY SYSTEM

14.1 Rules 44.1 and 44.4 shall apply

14.2 A boat that has taken a penalty or retired under rule 31.2 or 44.1 shall complete an infringement acknowledgement form at the race office within the protest time limit.

14.3 Rule 42

The Race Committee may display Code Flag "O" with the warning signal to signal pumping, rocking and ooching are allowed as specified in the class rules.

1. After the starting signal, the Race Committee may display Code Flag "O" with repetitive sounds at any rounding mark to signal that pumping, rocking and ooching are allowed as specified in the class rules. This instruction applies to a boat after she has passed the mark.
2. If the Race Committee has acted under instruction 14.3.1 or 14.3.2 and the wind speed becomes less than the limit specified in the class rules, the Race Committee may display Code Flag "R" with repetitive sounds at any rounding mark to signal that Rule 42 now applies. This instruction applies to a boat after she has passed the mark.

15. TIME LIMIT

The time limit will be 2 hours. Boats failing to finish within 30 minutes after the first boat sails the course and finishes will be scored Did Not Finish. This changes rules 35 and A4.

16. PROTESTS AND REQUESTS FOR REDRESS

16.1 Protest forms are available from the race office.

16.2 Protests shall be delivered within 90 minutes after the last boat has finished the last race of the day.

16.3 Notices will be posted on the official notice board within 30 minutes of the Protest Time Limit to inform competitors of hearings in which they are parties and the location of the hearing.

16.4 Notices of protests by the race committee or protest committee will be posted to inform boats under rule 61.1(b).

16.5 Breaches of sailing instructions 14.2, 18.1, 18.2, and 20.2 will not be grounds for protest by a yacht. This changes rule 60.1(a). Penalties for these breaches may be less than disqualification if the Protest Committee so decides.

16.6 On the last day of the regatta a request for reopening a hearing shall be delivered no later than 30 minutes after the party requesting the reopening was informed of the decision on that day, or within the protest time limit, if the party requesting reopening was informed of the decision on the previous day. This changes rule 66.

17. SCORING

- 17.1** The low point scoring system of Appendix A will apply.
- 17.2** 5 races are required to be completed to constitute a series.
- 17.3** When 5 races have been completed, a boats series score will be the total her race scores
- 17.4** When 6 to 10 races are completed a boats score be the total of her race scores excluding her worst score.

18. SAFETY REGULATIONS AND DECLARATIONS

- 18.1** Competitors shall sign on as an entrant prior to leaving the shore and sign off on returning to shore on each race day. Any boat failing to sign on as specified herein may be scored DNC.
- 18.2** Sign on; sign off, Infringement Acknowledgement and retirement sheets will be located downstairs adjacent to the Canteen.

19. REPLACEMENT OF CREW OR EQUIPMENT

- 19.1** Substitution of competitors or equipment will not be allowed without the written approval of the Race Committee.
- 19.2** Requests for substitution shall be made in writing to the Race Committee, at the first reasonable opportunity. If damage occurs on the water, equipment may be substituted before the following race and written permission shall be requested before the end of protest time on the same day. The written application for substitution and the decision of the Race Committee will be displayed on the notice board.

20. EQUIPMENT AND MEASUREMENT CHECKS

- 20.1** A boat or equipment may be inspected at any time for compliance with the class rules and sailing instructions. A boat can be instructed by the Measurer to proceed to a designated area for inspection.
- 20.2** A boat that fails to comply with this official request for inspection will be subject to protest by the Race Committee.

21. OFFICIAL BOATS

Official boats will be marked by displaying an ASC Burgee.

22. SUPPORT BOATS

Support boats shall stay at least 100 metres outside areas where boats are racing from the time of the preparatory signal for the first class to start until all boats are finished or the Race Committee signals a postponement, general recall or abandonment, unless required for rescue as directed by the Race Officer.

23. RADIO COMMUNICATION

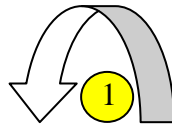
A boat shall neither make radio transmission while racing, nor receive radio communication not available to all boats, this will include mobile phones.

24. MEDIA AND TELEVISION POLICY

In participating in this regatta, all competitors automatically grant to the Organising Authority, the International Finn Association of Australia, its agents and sponsors of the regatta, the right in perpetuity, to make, use and show, from time to time, and at their discretion, any motion pictures, still pictures and live, taped or filmed television and other reproductions of him/her recorded during the period of the completion for the regatta in which the competitor participates and in all material related to the regatta without compensation.

Appendix 1 - Courses

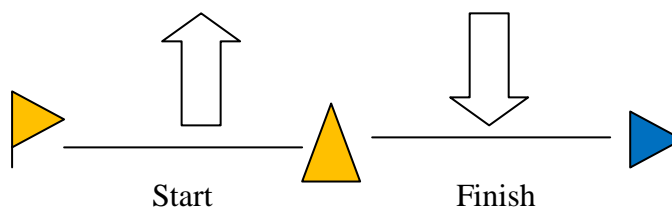
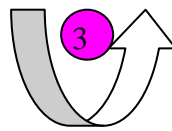
Course W – Windward / Leeward



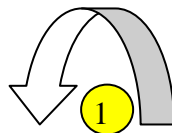
Courses

W2 – Start, 1, 3, 1, Finish

W3 – Start, 1, 3, 1, 3, 1, Finish

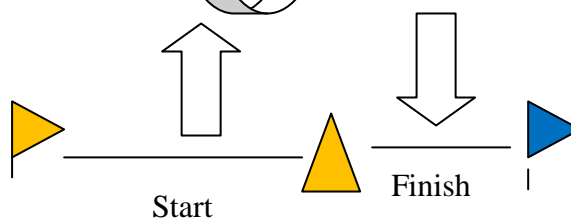
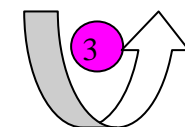
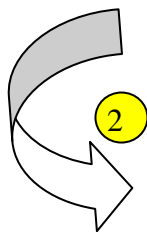


Course T - Triangle



Course

T – Start, 1, 3, 1, 2, 3, 1, Finish



Please Note:

The start and Mark 3 are common to the OK course.